

# *The Lice Snatcher*



**User Instructions**

# With the Lice Snatcher lice are no longer a problem

Now there is a simple and effective way to check hair for lice and remove lice if the hair turns out to be infested.

A treatment with the Lice Snatcher feels like a cool massage of the scalp. Find a balance where it scratches just a little, but so gently that it does not hurt. It requires some practice, so you may want to try it out on an adult first. The treatment is easiest if the hair is newly washed.

## This is how it is done

The comb and filter are disposable and need to be replaced after each treatment in order to remove the lice effectively. In order to avoid spreading of head lice, the same comb should not be used by several persons. The comb gets soft and the filter clogs if reused.

Make sure to check continuously that the Lice Snatcher suction is optimum; if you comb your palm, the Lice Snatcher should "stick" to your palm without problems when you turn your palm downwards.

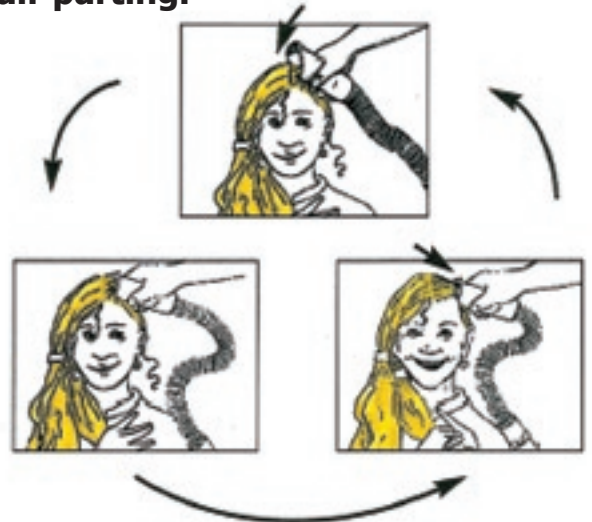
Find a place with good lighting and a comfortable working height. You may want to place the vacuum cleaner on e.g. a table. Start by combing the hair thoroughly with a brush or a comb.

Part long hair into two to six partings depending on thickness and length.

- 1) Suck one hair parting into the nozzle under the comb from the hair ends and up. The hair should hang straight and be able to flutter in the Lice Snatcher nozzle as it will otherwise mat.



- 2) Now start using the comb (you do so by tilting the nozzle downwards) and comb the hair in short, repeated sequences from the scalp and approx. 5cm down. This procedure should take about 4-5 minutes per hair parting.



- 3) End the combing of each hair parting by letting the comb run through the hair from scalp to hair end a couple of times.



- 4) Repeat this procedure until the entire scalp has been thoroughly combed.

You can see a treatment performed at the Lice Snatcher homepage  
[www.licesnatcher.com](http://www.licesnatcher.com)

Now disassemble the filter house (4 and 6); you may want to leave the vacuum cleaner on while doing this. Place one of the included filter lids (5b) on the filter. You can now see, whether any lice have been captured.

Note how many lice and nits you have captured in one of the enclosed treatment plans so you can keep track of the treatment progress.

**If lice are found when checking for head lice the first time, give a new treatment at once to make sure that all adult lice and preferably also all nits are removed.**

**If you are not sure that you have removed all lice, you merely repeat the treatment with a new comb and a new filter.**

## REMEMBER

**The Lice Snatcher does not remove the eggs, therefore the treatment must be continued with a total of three combing sessions with a 3-4 day interval followed by a final check treatment where you check that there are no more lice. Five treatments are enough if you follow the instructions. Thus the treatment period is 14 days.**

**If adult lice (3mm) are later found when combing, there may be a new infestation and thus also new-laid eggs. A new treatment must be commenced. Extra filters and combs can be purchased (refill). You can give as many extra treatments as you want. As long as there are lice in the hair, there is a certain risk of infestation which you can reduce by giving frequent treatments.**

**The Lice Snatcher also removes dandruff and scurf!**

The Lice Snatcher contains no PPC or other environmentally-unfriendly substances.

## What can go wrong?

### The vacuum cleaner

#### **suction is not powerful enough:**

The dust bag is full. The filter in the dust bag is clogged. The filter (5a) is clogged. The vacuum cleaner suction is not powerful enough.

#### **It is almost impossible**

#### **to get the comb through the hair:**

The hair was not combed thoroughly enough before beginning the treatment. The hair is greasy and needs to be washed. The hair mats because the ends need trimming. The hair is very thick and should be parted into smaller hair partings. The comb needs to be replaced.

#### **The comb is too hard against the scalp:**

This is most common when the hair is thin or short. Use a less powerful vacuum cleaner suction, if possible, but make sure you do not reduce it more than absolutely necessary.

#### **The hair is so long**

#### **that it touches the filter:**

The hose piece can be replaced by a longer piece. Contact the producer by letter or e-mail: [info@lusesnapperen.dk](mailto:info@lusesnapperen.dk)

#### **New lice keep appearing:**

Remember always to check the entire family and other persons whom they see a lot. They might also have a head lice infestation! Remember always to wash caps, scarves and bed-linen etc. when you have had a head lice infestation.

### Caution

- Do not apply the nozzle to eyes and ears
- Remove jewellery, glasses and other loose objects before beginning the treatment.
- Keep the lice in the sealed filter when you are done. It is easy to "lose" a louse or two.



Nits



Adult lice

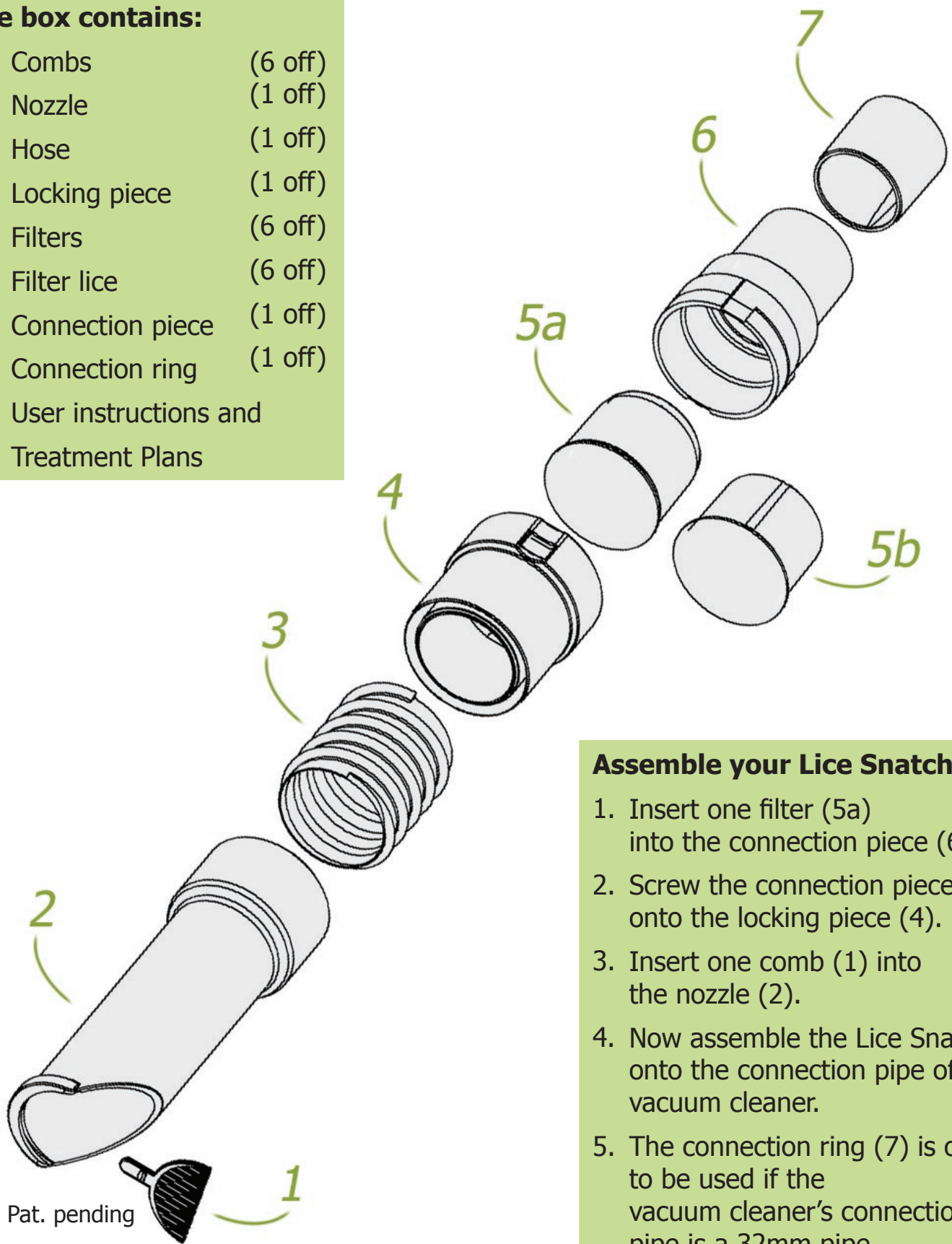
**Play with Leopold at the Lice Snatcher homepage**

**[www.licesnatcher.com](http://www.licesnatcher.com)**

### The box contains:

- 1. Combs (6 off)
- 2. Nozzle (1 off)
- 3. Hose (1 off)
- 4. Locking piece (1 off)
- 5a. Filters (6 off)
- 5b. Filter lice (6 off)
- 6. Connection piece (1 off)
- 7. Connection ring (1 off)

User instructions and  
Treatment Plans



Pat. pending

### Assemble your Lice Snatcher

1. Insert one filter (5a) into the connection piece (6).
2. Screw the connection piece (6) onto the locking piece (4).
3. Insert one comb (1) into the nozzle (2).
4. Now assemble the Lice Snatcher onto the connection pipe of your vacuum cleaner.
5. The connection ring (7) is only to be used if the vacuum cleaner's connection pipe is a 32mm pipe.

**Snatchers Company A/S**  
**Kanalvej 27**  
**DK-4700 Næstved**  
**Tel. +45 55 77 41 25**